

DSS-induced intestinal inflammation mouse model

✓ Test your drug or pre/probiotics in a fast and cost-effective intestinal inflammation model

Key benefits

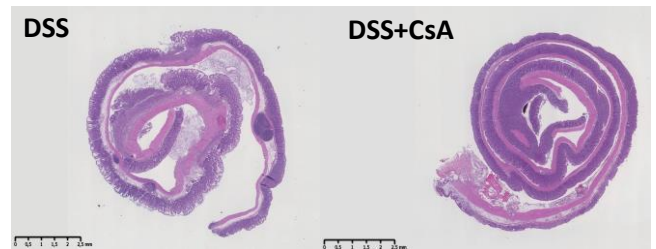
Get benefits from our dextran sodium sulfate (DSS) induced acute colitis mouse, a simple and rapid model of inflammatory bowel disease (IBD) for preclinical evaluation of drugs and pre or probiotics candidates.

ANIMAL MODEL

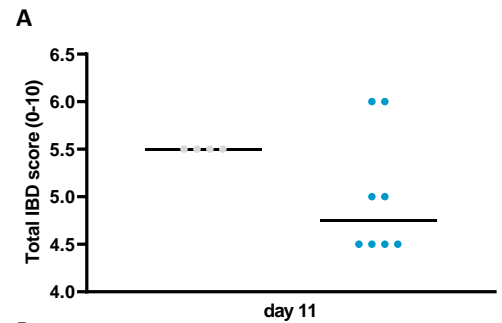
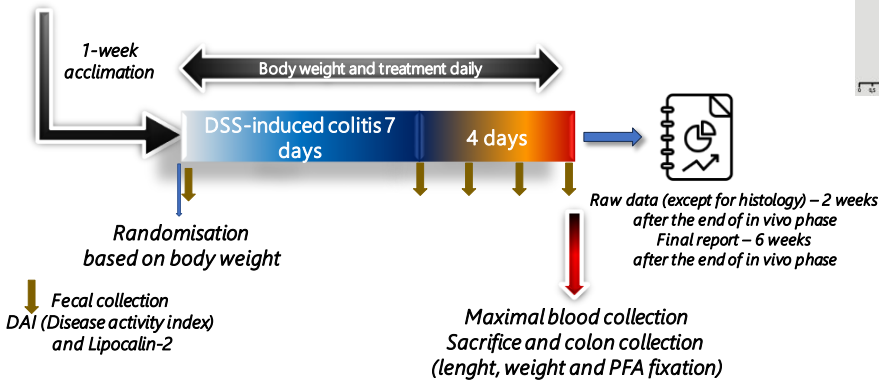
- **Background strain/gender:** C57BL/6J mice, male
- **Dextran Sodium Sulfate (DSS)- induced colitis:** 7 days of DSS in water (*ad libitum*)
- **Positive control:** Cyclosporin A (CsA)
- **Experimental design:**

CYCLOSPORIN A IMPROVES HISTOLOGY SCORES

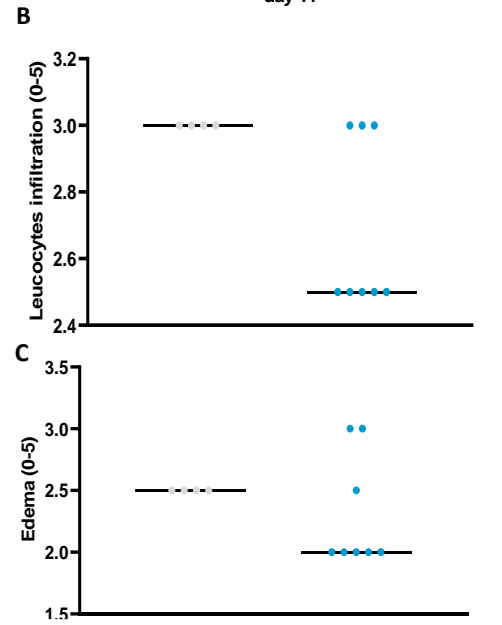
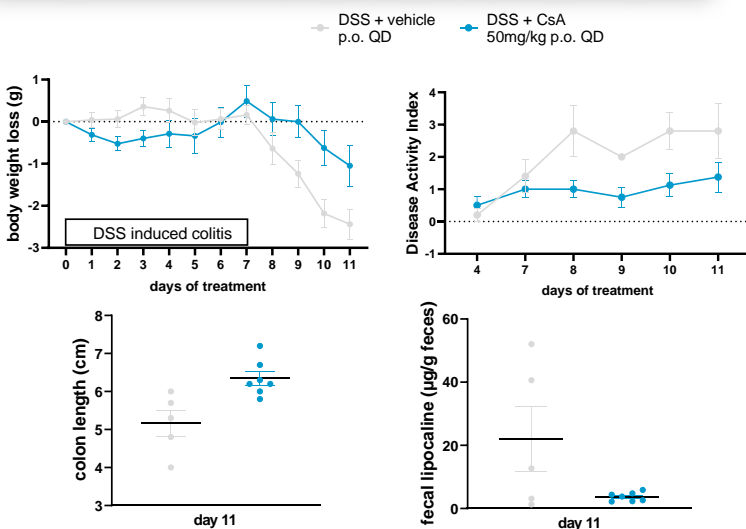
H&E staining - colon



C57BL6 male (8-week old)



CYCLOSPORIN A IMPROVES BODY WEIGHT AND COLON HEALTH



(A) Body weight loss, (B) Disease Activity Index (DAI), (C) colon length, and (D) fecal Lipocalin-2 (an inflammation marker) after 11 days of treatment with vehicle or CsA.

Upper panel: representative histology (H&E) pictures.

(A) total IBD (inflammatory Bowel Disease) score calculated from (B) leucocytes infiltration and (C) edema.