

GLUCOSE UPTAKE ASSESSMENT ON RODENT MUSCLES

✓ Evaluate the impact of your test compounds on glucose uptake in isolated rodent muscles.

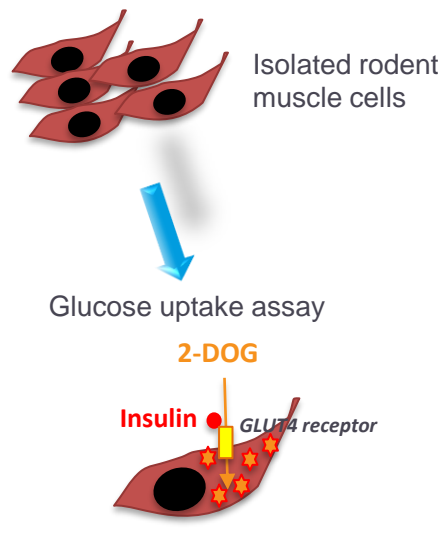
Key benefits:

- Quickly select your best drug compounds targeting insulin resistance and diabetes with our sensitive radio-tracer based glucose uptake assay on rodents' muscles.
- Test your drug dose-dependently, using insulin as positive control.

METHODS

Isolated muscles are incubated with vehicle/test compounds and ^3H -2-deoxyglucose (2-DOG).

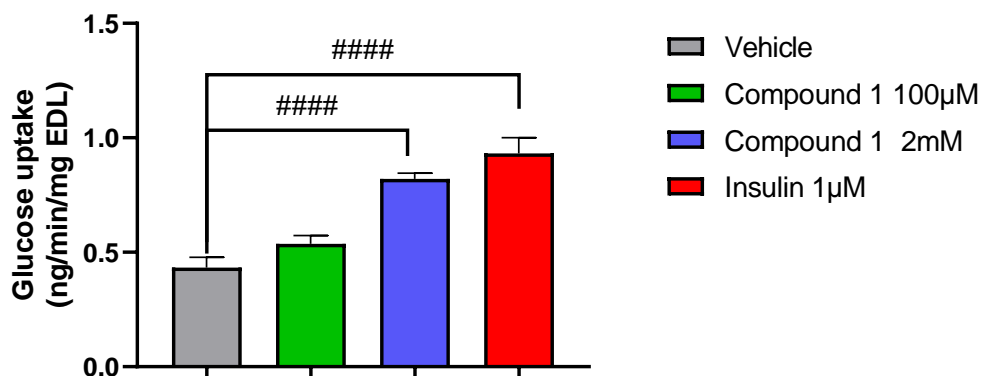
2-DOG is up taken but not metabolized by cells, which allows the ex vivo assessment of glucose uptake by isolated muscles.



Get your study report in 4 weeks

RESULTS

Dose-dependent evaluation of test compound 1 on muscle glucose uptake, which is markedly increased by insulin.



Glucose uptake assay in wild type mouse muscle (extensor digitorum longus, EDL) incubated with vehicle, test compound 1 or insulin for 30 minutes at 37°C in a medium containing 2DOG*. Data are expressed as mean +/- SEM. ####p<0.0001 vs. vehicle.