

GLUCOSE UPTAKE ASSESSMENT ON ISOLATED RODENT ADIPOCYTES

✓ Evaluate the impact of your test compounds on glucose uptake in isolated adipocytes.

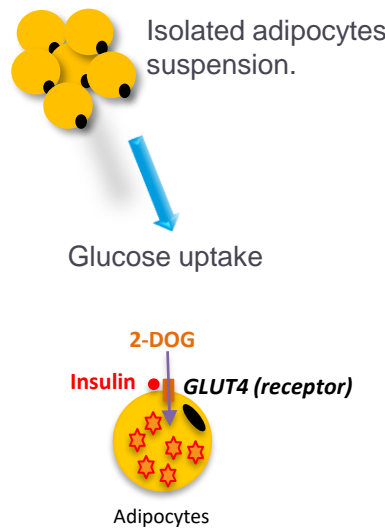
Key benefits:

- Quickly select your best drug compounds targeting insulin resistance and diabetes with our sensitive radio-tracer based glucose uptake assay on rodents' isolated adipocytes.
- Test your drug dose-dependently, using insulin as positive control.

METHODS

Isolated adipocytes suspension are incubated with vehicle/test compounds and ³H-2-deoxyglucose- (2-DOG).

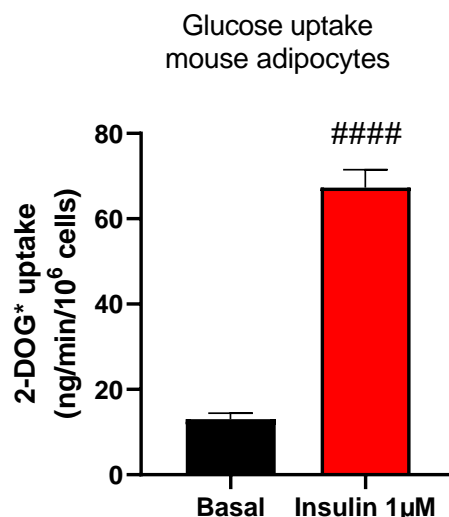
2-DOG is up taken but not metabolized by cells, which allows the ex vivo assessment of glucose uptake by isolated adipocytes.



Get your study report in 4 weeks

RESULTS

Insulin increases glucose uptake in isolated adipocytes



Glucose uptake assay in wild type mouse adipocyte incubated without (basal) or with insulin 1µM for 10 minutes at 37°C in a medium containing 2DOG*. #####p<0.0001 vs. Basal.